



GIM Suite Integration Overview

Your data, more connected

GIM Suite provides a secure and seamless way to access and transfer your geoscientific information across your mining software eco-system.

acquire customers and third-party software vendors can utilise GIM Suite's REST API capabilities to develop integrations, enabling users to access, query, create and update data stored in GIM Suite. This eliminates the need for manual import and export integration mechanisms or routines, SQL scripting, and improves solution-to-solution integration.

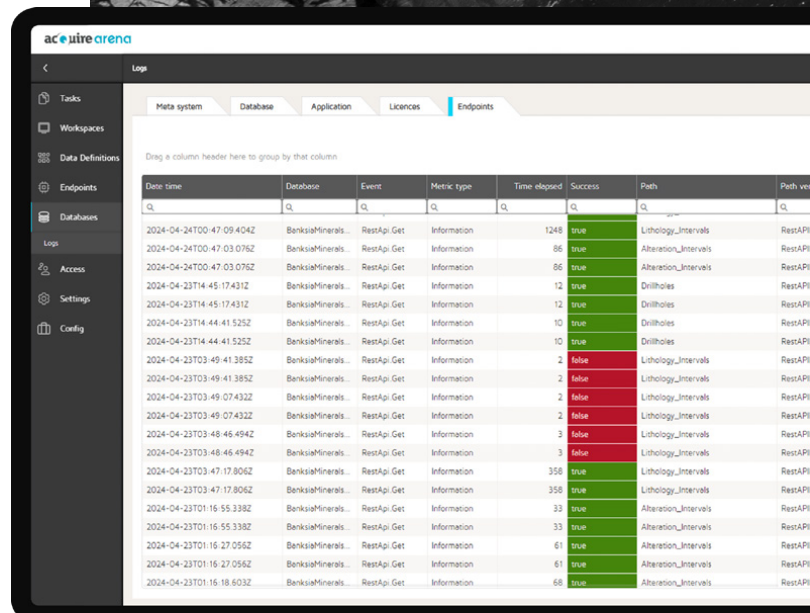
The REST API enables GIM Suite to expose REST endpoints. Any third-party software with the ability to interpret the REST endpoints can integrate with GIM Suite to enable data transfer.

The right type of access for your solution

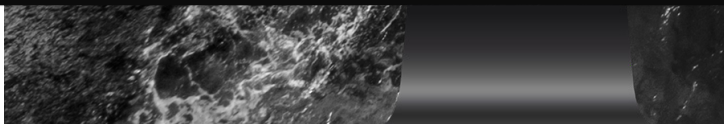
The REST API is available to use with a GIM Suite Integration licence. This allows third-party software to interact with GIM Suite's database, via the REST API, with read/write or read only access.

All GIM Suite Object Model compound definitions can be read using the REST API with read only access. Read/write access is only available to a smaller subset of Object Model compound definitions, such as drillholes, point samples and geology interval compound definitions.

You can discuss what type of access you need for your GIM Suite and third-party software integrations with your Commercial Account Manager.



Date time	Database	Event	Metric type	Time elapsed	Success	Path	Post vs
2024-04-24T00:47:09.404Z	BenksiaMinerals	RestApi.Get	Information	1248	true	Lithology_Intervals	RestAPI
2024-04-24T00:47:03.076Z	BenksiaMinerals	RestApi.Get	Information	86	true	Alteration_Intervals	RestAPI
2024-04-24T00:47:03.076Z	BenksiaMinerals	RestApi.Get	Information	86	true	Alteration_Intervals	RestAPI
2024-04-23T14:45:17.431Z	BenksiaMinerals	RestApi.Get	Information	12	true	Drillholes	RestAPI
2024-04-23T14:45:17.431Z	BenksiaMinerals	RestApi.Get	Information	12	true	Drillholes	RestAPI
2024-04-23T14:44:41.525Z	BenksiaMinerals	RestApi.Get	Information	10	true	Drillholes	RestAPI
2024-04-23T14:44:41.525Z	BenksiaMinerals	RestApi.Get	Information	10	true	Drillholes	RestAPI
2024-04-23T03:49:41.385Z	BenksiaMinerals	RestApi.Get	Information	2	false	Lithology_Intervals	RestAPI
2024-04-23T03:49:41.385Z	BenksiaMinerals	RestApi.Get	Information	2	false	Lithology_Intervals	RestAPI
2024-04-23T03:49:07.432Z	BenksiaMinerals	RestApi.Get	Information	2	false	Lithology_Intervals	RestAPI
2024-04-23T03:49:07.432Z	BenksiaMinerals	RestApi.Get	Information	2	false	Lithology_Intervals	RestAPI
2024-04-23T03:48:46.494Z	BenksiaMinerals	RestApi.Get	Information	3	false	Lithology_Intervals	RestAPI
2024-04-23T03:48:46.494Z	BenksiaMinerals	RestApi.Get	Information	3	false	Lithology_Intervals	RestAPI
2024-04-23T03:47:17.806Z	BenksiaMinerals	RestApi.Get	Information	358	true	Lithology_Intervals	RestAPI
2024-04-23T03:47:17.806Z	BenksiaMinerals	RestApi.Get	Information	358	true	Lithology_Intervals	RestAPI
2024-04-23T01:16:55.338Z	BenksiaMinerals	RestApi.Get	Information	33	true	Alteration_Intervals	RestAPI
2024-04-23T01:16:55.338Z	BenksiaMinerals	RestApi.Get	Information	33	true	Alteration_Intervals	RestAPI
2024-04-23T01:16:27.056Z	BenksiaMinerals	RestApi.Get	Information	61	true	Alteration_Intervals	RestAPI
2024-04-23T01:16:27.056Z	BenksiaMinerals	RestApi.Get	Information	61	true	Alteration_Intervals	RestAPI
2024-04-23T01:16:18.603Z	BenksiaMinerals	RestApi.Get	Information	68	true	Alteration_Intervals	RestAPI



Ensuring your data is secure and validated

Your data remains secure with REST API access only available within GIM Suite and controlled by the database manager. Access and authentication are controlled through a combination of user roles and tokens.

Endpoints created using the REST API, adhere to GIM Suite's existing data definition structure, enforcing your business rules and validations. Database Managers can set specific insert, update and delete options for each endpoint and once an endpoint is created, it can then be assigned to specific user groups.

Database Managers control and configure the user roles that have read and/or write access to the endpoints and data views.

Track and view usage

Database Managers can view all requests made to their REST API endpoints on a dashboard. This dashboard displays important usage information and allows it to be filtered and exported for further analysis.

Accessing GIM Suite's REST API capabilities

GIM Suite's REST API capabilities are available with a valid GIM Suite Integration subscription licence. Two types of licences are available:

- **GIM Suite Integration licence:** Permits access to both the read and write functionality of the REST API. This subscription licence gives users the ability to write to any Object Model compounds that are available.
- **GIM Suite Integration Read Only licence:** Permits a read-only view of Object Model compound definitions.

Read the [GIM Suite Licensing Information Fact Sheet](#) for more information on GIM Suite licensing.

Find out more

If you're a GIM Suite customer and would like to know more about GIM Suite's REST API capabilities and GIM Suite's Integration licences, please contact your acQure Representative at customers@acquire.com.au.

If you're a software company interested in developing an integration with GIM Suite, please contact integration@acquire.com.au.

Frequently asked questions

Q: What IT requirements do I need to use GIM Suite's REST API?

A: IT requirements will differ depending on your architecture and systems involved. When external or cloud applications are required to integrate with the GIM Suite REST API on your internal networks, your IT team will need to provide the correct pathway into your network for a secure authenticated connection to occur.

Q: I'm a GIM Suite user. Can I create integrations with my company's existing business systems, like Power BI?

A: Yes, business intelligence tools and systems, such as Power BI, can be integrated with the GIM Suite REST API. This type of integration requires configuration from your company's IT or technical services team and includes the use of a ClientID and Secret as part of the header of every request made to the GIM Suite REST API. This is made available to customers and vendors with a Technology Integration Agreement.

Q: I'm a software company. Can I develop and build an integration with GIM Suite's REST API?

A: Yes. You will need to contact us at integration@acquire.com.au to discuss and you will be required to sign a Technology Integration Agreement with acquire.

Q: How do I stop bad or erroneous data being added to GIM Suite from third-party systems?

A: REST API endpoints operate using GIM Suite's existing data definitions. This means business rules and validations are applied the same as they are for your configured data capture tasks. Database Managers can also set specific insert, update and delete options for endpoints.

Q: Where do I get my access token from?

A: Tokens are used rather than usernames and passwords. Users can find their access tokens in the User Profile page within GIM Suite's web interface. System Users will have tokens generated and managed by your Database Manager and/or Access Manager. More information about user types and access tokens are available in GIM Suite's online help.

